

2317 WISCONSIN AVE

WASHINGTON, DC 20007 ■ 2,646 SQUARE FEET

RETAIL BUILDING FOR SALE



Sale Price: \$1,315,000.00

Improvement Area: 2,646 sf (GBA)

Site Area: 1,853 sf

Zoning: C-2-A

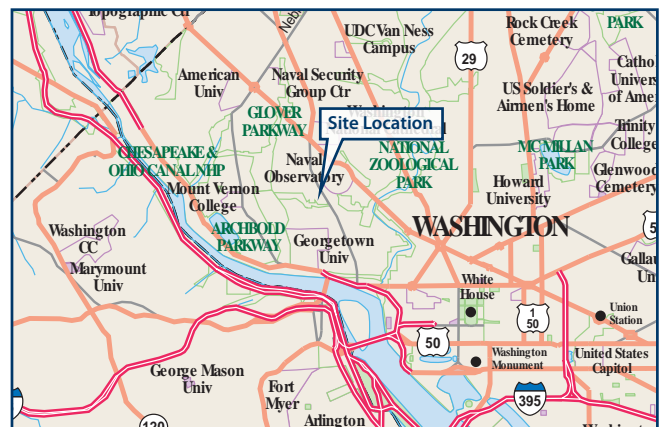
Property Rights Conveyed:

Fee Simple Estate

Lot 951 in Square 1299

RETAIL SPACE IN GLOVER PARK

- This two-story Commercial row Building includes a Full Basement and two rear on-site Parking Spaces in back
- Building is one store south of Whole Foods and two blocks north of the new Safeway
- Located in a strong mix of Restaurants, Office Buildings, Retail stores and other Commercial Development
- Surrounded by stable, well established Residential Neighborhood



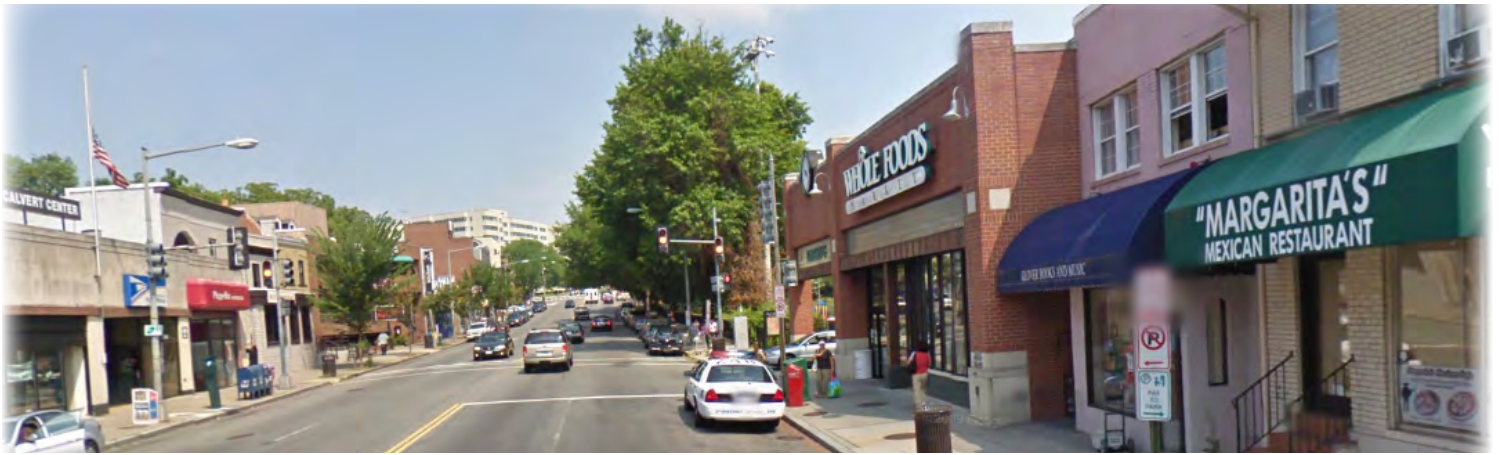
CONTACT:

EUGENE KENNEY

202.739.0372

eugene.kenney@cushwake.com





Demographics within .5 Miles

Total Population:	30,436
Total Households:	14,028
Median HH Income:	\$78,728

Market Highlights:

- Located in the Glover Park neighborhood of Washington, DC
- Georgetown University is approximately half a mile south
- Wisconsin Avenue is a major transportation corridor that originates at the Georgetown waterfront
- The weekday traffic count along Wisconsin Avenue in Glover Park is approximately 17,400 vehicles per day

CONTACT:

EUGENE KENNEY

202.739.0372

eugene.kenney@cushwake.com

